

IRONEDGE.

Leg Press / Hack Squat Combo

Setup Instructions

⚠ CAUTION: Read all precautions and instructions before using this equipment. Save this manual for future reference.



Table Of Contents

General Information and Maintenance Advice.....	2
Assembly Instructions.....	3-8
Part List.....	9

General Information and Maintenance Advice

Be sure to read the entire manual before you assemble or operate your Cable Machine. Please note the following precautions:

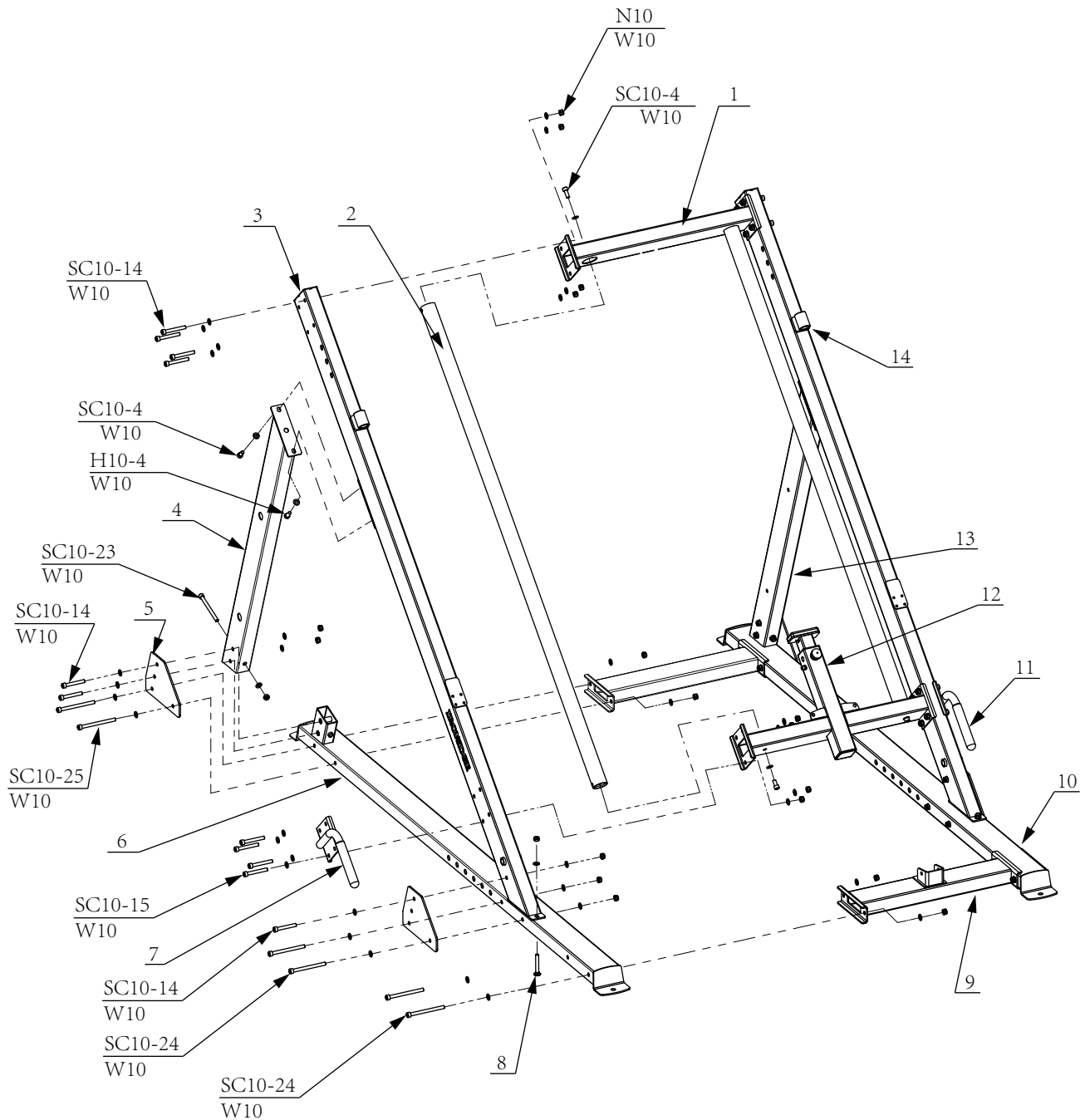
1. Keep children and pets away from the machine
2. To be used by one person at a time
3. Do not use the equipment near water or outdoors
4. Position on a level surface
5. Keep hands away from moving parts
6. Always wear appropriate workout clothing when exercising. Do not wear clothing that could become caught in the equipment.
7. Use the equipment only for its intended use as described in this manual. Do not use attachments not recommended by the manufacturer.
8. Before using the equipment, always do stretching exercises to properly warm up.
9. Never operate the equipment if the equipment is not functioning properly.

Warranty Terms

- The Frame is under warranty for 10 years against manufacturing defects
- Integral bearings, guide rods, pulleys, weight plates, cables and grips are under warranty for 1 year against manufacturing defects
- Upholstery is under warranty for 90 days against manufacturing defects
- Warranty does not extend to wear and tear through normal use, or rust

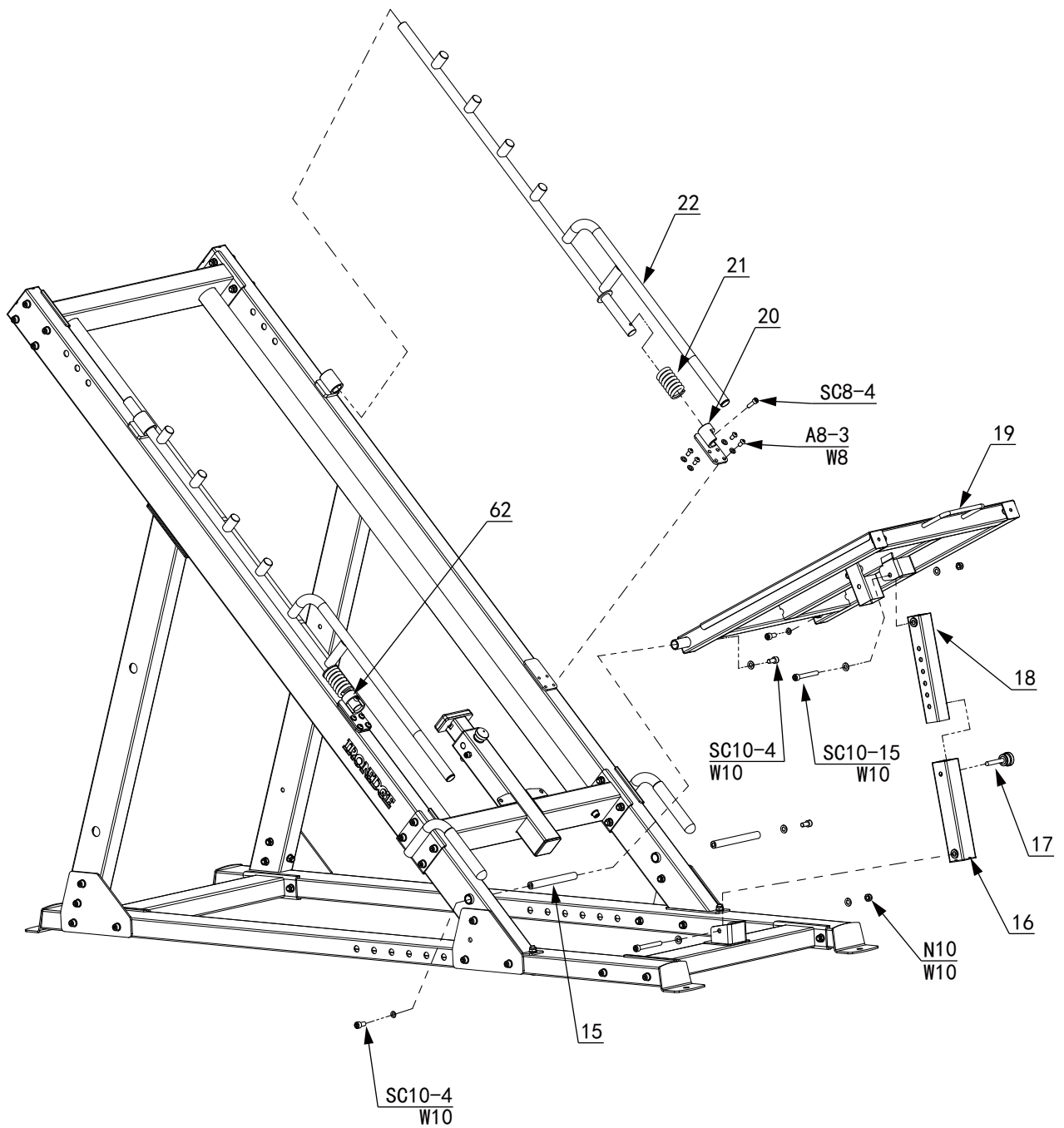
STEP 1

50% 



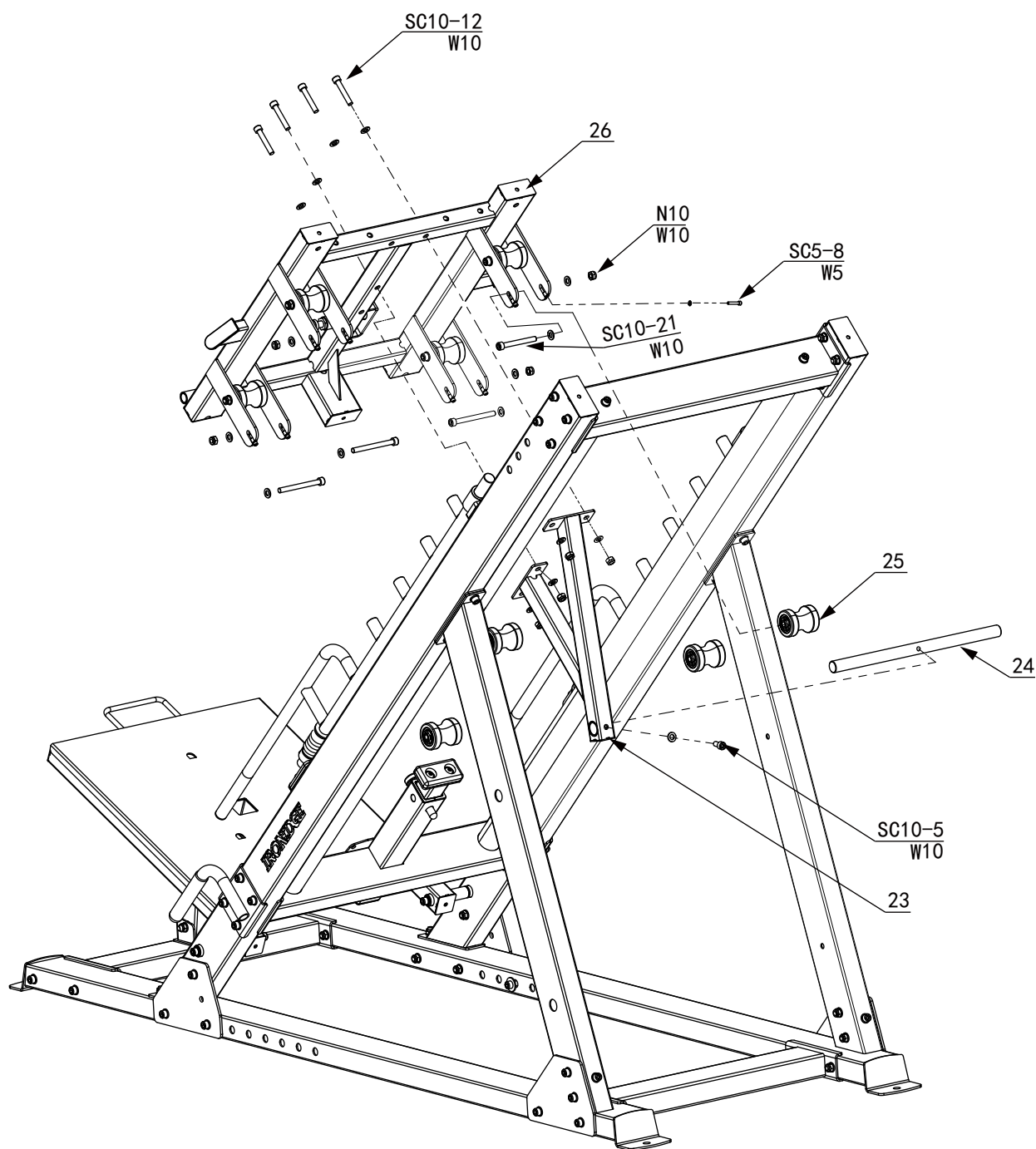
STEP 2

50% 



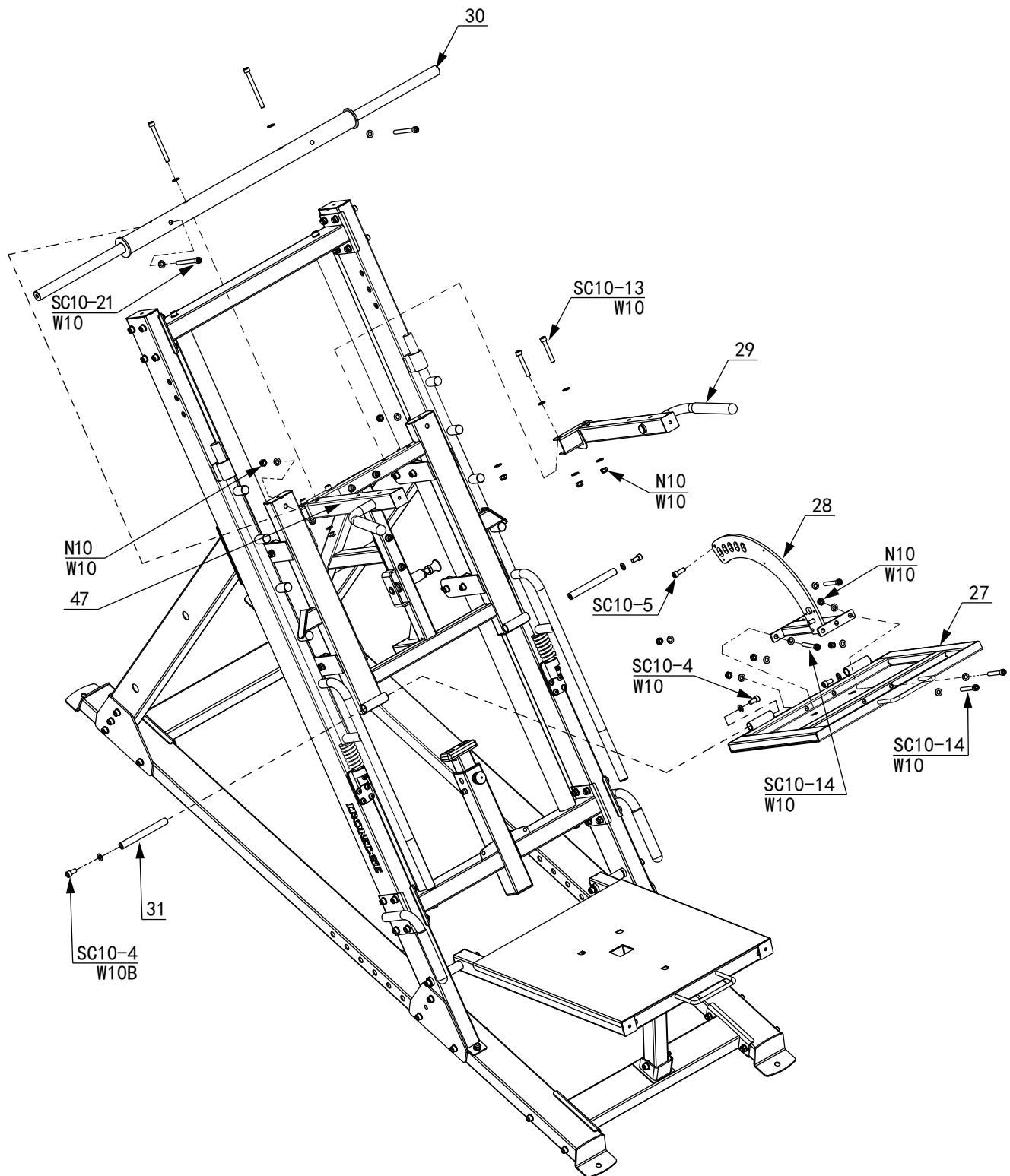
STEP 3

50%



STEP 4

50%



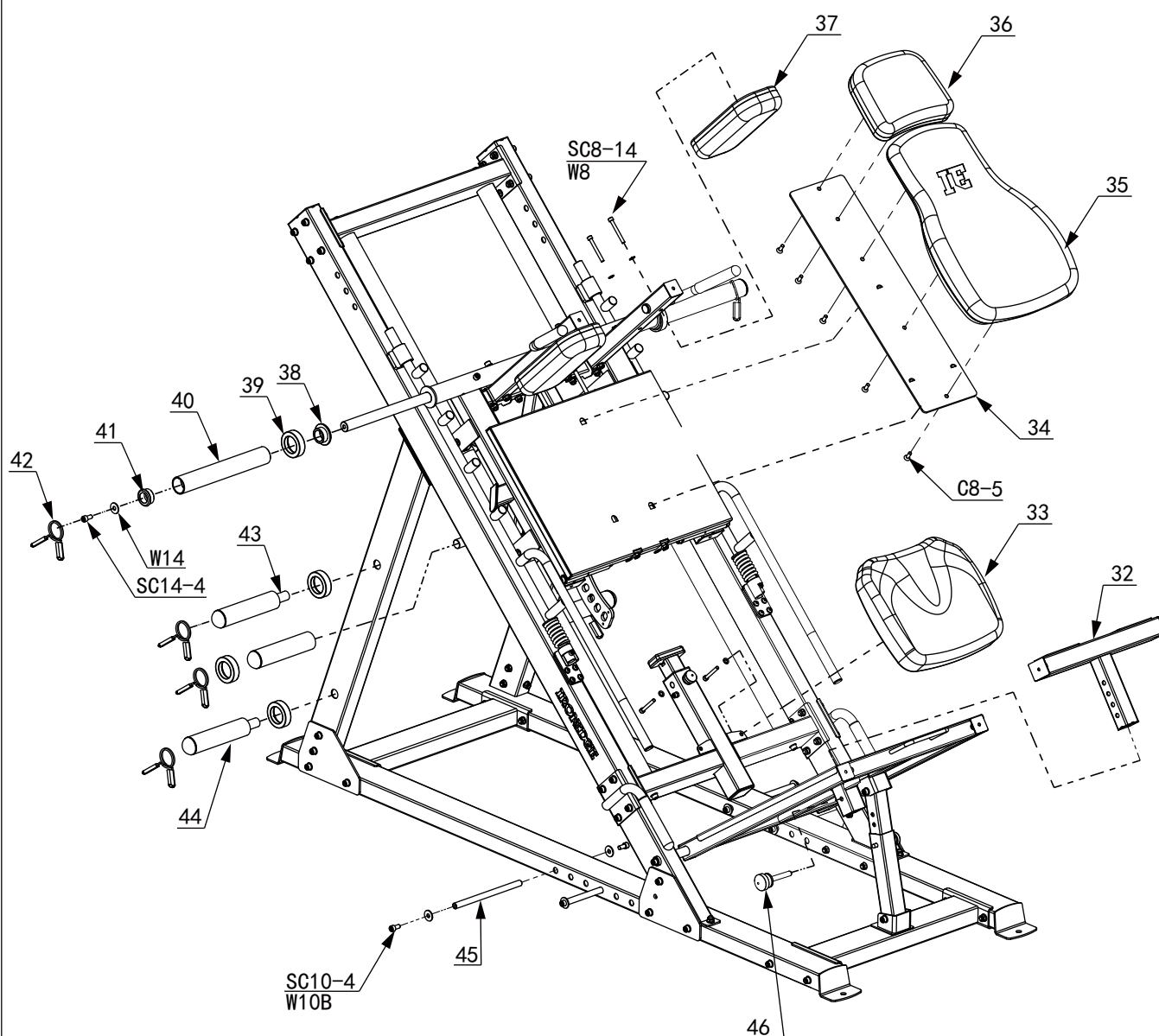
INFORMATION

We recommend having a second person assist with lifting heavy items during assembly.

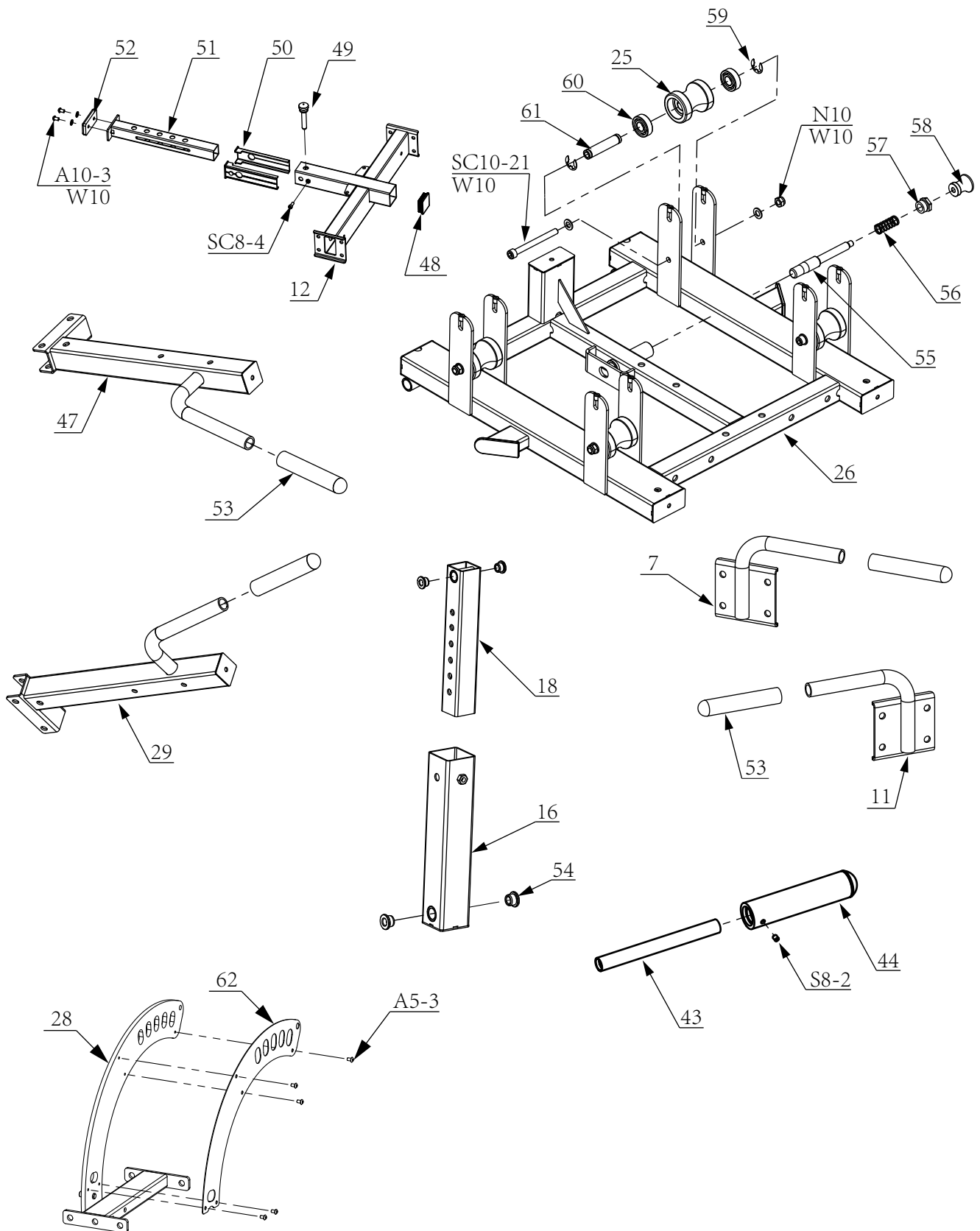
100%



STEP 5



PREASSEMBLED STEP



PARTS LIST

PART #	DESCRIPTION	QTY
1	Top Connecting Tube Assembly	1
2	Guide Rod	2
3	Inclined Tube Assembly 1	1
4	Supporting Tube Assembly 1	1
5	Connecting Plate	4
6	Bottom Lengthwise Tube Assembly 1	1
7	Handle Assembly 1	1
8	Carriage Bolt M10x70	2
9	Bottom Transverse Tube Assembly 1	1
10	Bottom Lengthwise Tube Assembly 2	1
11	Handle Assembly 2	1
12	Pad Mounting Tube Assembly	1
13	Supporting Tube Assembly 2	1
14	Inclined Tube Assembly 2	1
15	Shaft L=169mm	2
16	Adjusting Support Assembly	1
17	Pin	1
18	Perforated Tube Assembly	1
19	Lower Pedal Assembly	1
20	Limit Bracket 1	1
21	Spring 1	2
22	Safety Bar Assembly	2
23	Barbell Bracket	1
24	Barbell Rod	1
25	Plastic Wheel	8
26	Sliding Frame Assembly	1
27	Higher Pedal	1
28	Adjusting Plate Assembly	1
29	Handle Assembly	1
30	Weight Bar	1
31	Shaft L=165	2
32	Foot Support Assembly	1
33	Seat Pad	1
34	Back Pad Mounting Plate	1
35	Back Pad	1
36	Head Pad	1
37	Shoulder Pad	2
38	Tube Bushing	2
39	Ruber Spacer	2
40	Outer Weight Tube	2
41	Outer Tube Bushing	2
42	Barbell Clamp	8
43	Short Barbell Bar	4
44	Olympic Adapter Sleeve	4
45	Hanging Rod	4
46	Pin	1

PART #	DESCRIPTION	QTY
47	Handle Assembly	1
48	Square Cap	1
49	Pin 2 Rod Diametre=16	1
50	Plastic Sleeve	2
51	Safe Tube	1
52	Rubber Buffer	1
53	Handle Grip	4
54	Copper Bushing	4
55	Pull Pin	1
56	Spring	1
57	Threader Bushing	1
58	Knob	1
59	Circlip	16
60	Bearing	16
61	Shaft	8
62	Shield Plate	1
W8	Washer 8	19
W10	Washer 10	141
W10B	Bigger Washer 10	16
W14	Washer 14	2
N10	Nut M10	64
A5-3	Allen Bolt M5 x 8	5
A8-3	Allen Bolt M8 x 15	8
A10-3	Allen Bolt M10 x 16	2
S8-2	Socket Set Screw M8x10	6
C8-6	Counter Sunk Head Screw M8 x 30	5
SC5-8	Socket Cap Screw M5x25	8
SC8-3	Socket Cap Screw M8x15	1
SC8-4	Socket Cap Screw M8x20	3
H10-4	Hex Head Cap Screw M10x20	2
SC8-12	Socket Cap Screw M8x60	2
SC8-14	Socket Cap Screw M8x70	4
SC10-4	Socket Cap Screw M10x20	20
SC10-5	Socket Cap Screw M10x25	6
SC10-12	Socket Cap Screw M10x60	4
SC10-13	Socket Cap Screw M10x65	4
SC10-14	Socket Cap Screw M10x70	10
SC10-15	Socket Cap Screw M10x75	17
SC10-17	Socket Cap Screw M10x85	1
SC10-21	Socket Cap Screw M10x105	10
SC10-22	Socket Cap Screw M10x110	2
SC10-23	Socket Cap Screw M10x115	2
SC10-24	Socket Cap Screw M10x120	4
SC10-25	Socket Cap Screw M10x125	8
SC14-4	Socket Cap Screw M14x20	2